



Welcome to Torrot Electric

Thanks for becoming a brand new owner of one of our fun to drive electric motorbikes KIDS for young drivers (designed for children from 3 to 12 years old).

Follow this instruction in order to start enjoying your KIDS:



TORROT

a Basic instructions for charging, parking and safe use



Check the following statements before using:



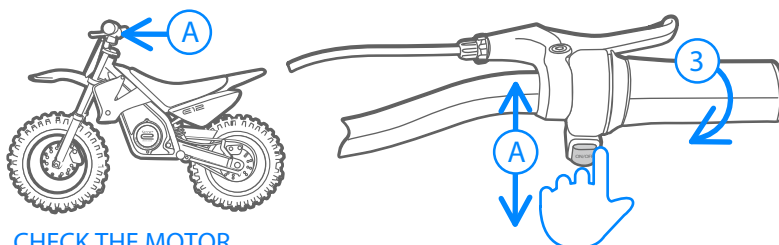
TYRES PRESSURE

A standard pressure of 1 BAR is OK for all of the models. Nevertheless, for more accurate pressures, check the table.



BRAKES

Check the brake system moving the KiDS back and forth while pulling the brake levers (one by one). With the screw you can move the lever closer to the grip.



CHECK THE MOTOR

Press the ON button (A) in the handlebar, next to the grip. After pressing it, the KIDS is ready to go. Turn the grip (3) just enough to see that the motor is working.

TABLE OF RECOMMENDED PRESURES

BAR - Kg/Cm ²	FRONT	REAR
T10/12	0,9	0,6-0,8
E10/12	1,0	1,2
S10/12	1,2	1,4

RECOMMENDED PRESSURE FOR DRY, WET AND MUDDY ENVIROMENTS AND A 20Kg DRIVER. FOR ADJUSTING THE RIGHT PRESSURE IN TRIAL, A SPECIAL MANOMETER WILL BE NEEDED.



MAKE SURE THAT THE **BUTTON IS IN OFF POSTION** WHEN YOU ARE NOT USING OR CHARGING THE MOTORBIKE.



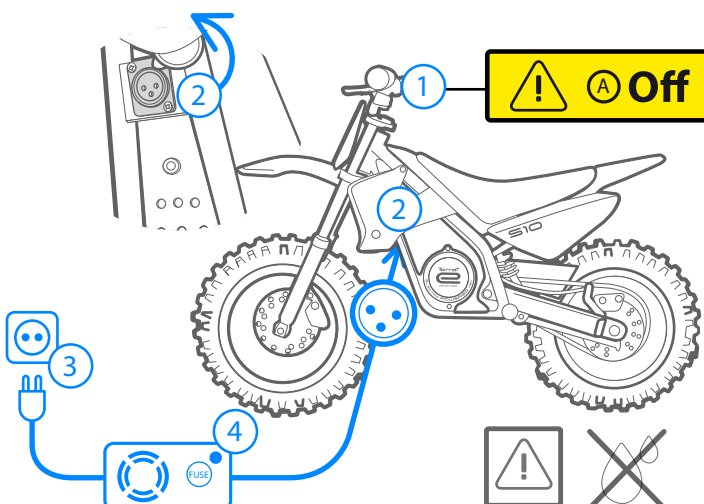
Battery charge

Always follow this instructions to charge the battery:

① Turn the motorbike off (A) button in off position). **First** connect the 3 pin connector ② to the motorbike. **Then**, plug the cable to the home network ③. The LED ④ will stay red untill the motorbike is fully charged (4h aprox.) and will turn green when it is ready.



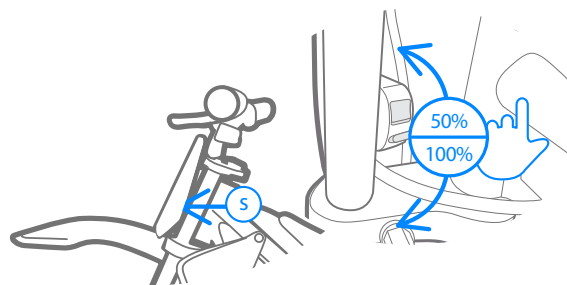
IN ORDER TO EXTEND THE BATTERY LIFE, CHARGE AFTER **EVERY** USE AND DON'T DISCONNECT UNTIL THE LED IS GREEN



⚡+ Power switch selection

You have a switch in the left side under the handlebar (S). You can select either 100% or 50% of the total power.

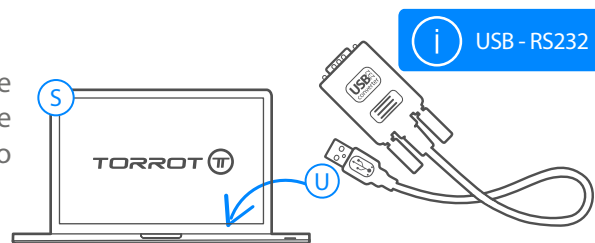
*FOR OTHER MAPPING OPTIONS VIA USB/BLEUTOOTH, CHECK THE USER HANDBOOK OR CONTACT YOUR DEALER



Software configuration *

For a tailor-made configuration (Power, Speed, Throttle response and Regeneration) you have access to a software which you should install in you computer and connect to your KIDS using USB-RS232 cable.

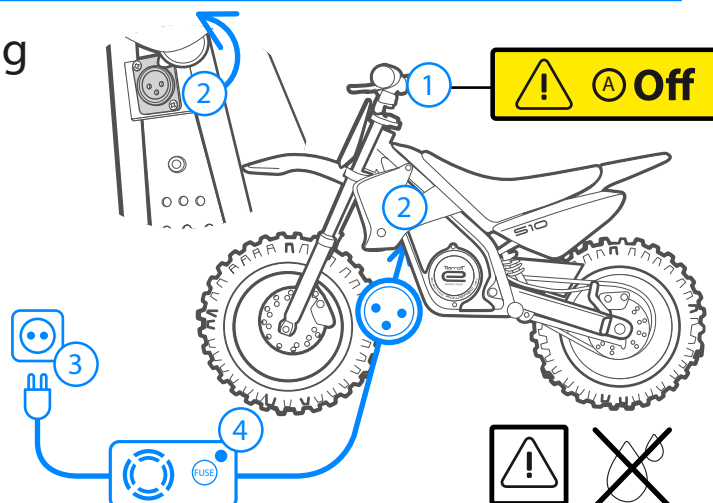
*SOFTWARE DOWNLOAD LINK <http://torrotelectric.com/soft-kids>
COMPATIBLE WITH WINDOWS XP, 7, 8 AND 10



One month without use. Parking

MAINTENANCE AND BATTERY CARE

If your KIDS is going to be more than one month without use, you must connect it to the charger and left it connected to the home network. By doing this, the charger does a maintenance to the battery without consuming extra energy.



Only KIDS inside the box (packaging)

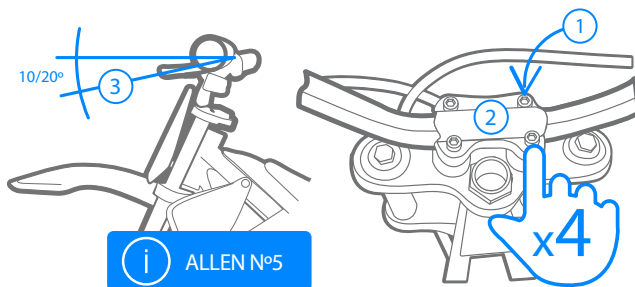
Content verification

Check if all the materials in the list are in the box

Handlebar assembly

If the motorbike is delivered in a box, the motorbike will be totally assembled except the handlebar.

- ☐ KIDS MOTORBIKE
- ☐ 4 ALLEN SCREWS (PRE-ADJUSTED IN THE PLATE)
- ☐ SMALL BOX WITH THE CHARGER
- ☐ THIS INFORMATIVE PAPER ;-)



- ① Unscrew the 4 Allen M6 that you have preassembled, take the plastic tube off and place the handlebar properly.
- ② Place the plate on the handlebar and screw it gently.
- ③ Adjust it so the levers stay in the correct angle and tighten the screws.



USE UNDER ADULT'S SUPERVISION

ATTENTION: THIS MOTORBIKE IS NOT A TOY, THE FATHER, INSTRUCTOR OR THE RESPONSIBLE PERSON OF THE CHILD SHOULD ALWAYS BE AT HIS SIDE. THE YOUNG DRIVER HAVE TO WEAR HELMET, GLOVES AND PROPER PROTECTIONS, IF YOU DON'T HAVE IT, GET IT FROM WWW.TORROT.COM/SHOP

MAXIMUM WEIGHT

THE MOTORBIKE HAS BEEN DESIGNED FOR A MAXIMUM WEIGHT OF 30KG FOR KIDS10 AND 40KG FOR KIDS12. A HEAVIER WEIGHT CAN DAMAGE THE CHASSIS AND SUSPENSIONS, APART FROM A MALFUNCTION OF THE MOTOR. WHICH INVALIDATES THE WARRANTY

KIDS MAINTENANCE

AFTER EVERY USE THE CHAIN SHOULD BE CLEANED AND LUBRICATED. THE CHAIN TENSION SHOULD BE REGULARLY CHECKED. IF NECESSARY, GO TO YOU NEAREST DEALER FOR YOU KIDS' MAINTENANCE